

# FEDERATED FACTS



December, 2013

## What's Inside:

- RAHM Photos
- Christmas Time, A Poem
- 12 Days of Christmas
- Technology
- Calendar
- Wildlife Wall
- Wreaths/ FOOTBALL

## DIANE'S DIGGINGS

The Christmas season is in full swing and garden clubs have been especially busy. I personally want to express my appreciation to everyone who has participated in the Christmas

***December 14, 1-3,  
Christmas Tea,  
11 Ridgewood Road***

tree and wreath decorating. The executive committee is hosting our annual tea at my home on Saturday, December 14 from 1-3 pm. I hope everyone will be able to attend and remember guests are welcome. This is a convenient way of keeping in touch with those you don't see as often as you'd like.

## CHRISTMAS AT RAHM

**Thank you for your participation in the annual Christmas tree decoration activity at the Rome Area History Museum.**



**Spade and Trowel**

**Federated Facts, December 2013, Holiday Issue**



**Three Rivers**



**Mountain View**



**Townview**



**Chattooga**

The results are: First Place: Spade and Trowel; Second Place: Camellia; Third Place: Mountain View  
First Place: Receives use of the meeting room at the RAHM. This is a value of \$850.00.  
Second Place: Rick Patterson, Partridge, will provide a group luncheon for Camellia.  
Third place: Choice of location for your tree next year  
The museum is beautiful.  
Thank you for your hard work.



**Federated Facts, December 2013, Holiday Issue**



**Camellia**



**Thistle**



**Hoe'n in Euharlee**

**(RFGC is glad your group joined us!)**



**Lavender View**

This year the RAHM trees were scored by out-of-town judges. The comments they made were exciting to hear. Better still are the comments that members of the community have made about the display of trees. Just the other day a group of senior citizens, those we did the Fall Festival for, and a group of middle school students had the opportunity see the trees. Thanks to all of you who bring visitors to the Museum.



### Rome African Violet Study Group

#### Christmas Time

© [Ronald Doe](#)

Christmas Time is finally here,  
It only comes but once a year.  
And it's a time to spread good cheer,  
To those we love and hold so dear.

Christmas Time is a time of glee,  
A time when peace and love run free.  
A time for those like you and me,  
To sit beneath the Christmas Tree.

Christmas Time is a time of joy,  
A time to sit back and enjoy.  
The smile on each girl and boy,  
As they play with a Christmas Toy.

Christmas Time is a time to share,  
The passing of another year.  
Birth of Jesus, a joyful prayer,  
To show loved ones how much we care.

Christmas Time is a time for song,  
A time for us to get along.  
To make us feel Lord Jesus strong,  
Forgive all those who did us wrong.

Christmas Time is a time to pray,  
Put love and kindness on display.  
Show compassion along the way,  
Christmas Time should be everyday

Source: [Christmas Time, Christmas Poem](#)  
<http://www.familyfriendpoems.com/poem/christmas-time#ixzz2mLSgKpnS>

## Cost Of Items In '12 Days Of Christmas' Tops \$114,000

By The Associated Press

The price of lords-a-leaping and ladies dancing has spiked this holiday season, but other items mentioned in the carol "The Twelve Days of Christmas" still cost the same as they did last year.

Buying one set of the gifts mentioned in each verse costs \$27,393 in stores, or 7.7 percent more than last year, according to the so-called Christmas Price Index that PNC Wealth Management updates annually. And if you buy all 364 items repeated throughout the carol, you'll pay \$114,651 — 6.9 percent more than last year.

Last-minute shoppers who turn to the Internet will pay even more for all the gifts — about \$173,000.

"We were surprised to see such a large increase from a year ago, given the overall benign inflation rate in the U.S.," said Jim Dunigan, managing executive of investments for PNC.

The federal government's core Consumer Price Index rose only 1.7 percent this year.

In the three decades since the list was started in 1984, year-over-year increases have averaged 2.9 percent, which is exactly the same number as broader U.S. inflation. But it's a fickle list because the price of some items has barely budged, while others have soared.

Seven swans cost \$7,000 this year, the same as in 1984, while the cost of a single partridge went from \$12.57 to \$15 during the same period. Need one pear tree to put that partridge in? Thirty years ago it cost \$19.95, but will now set you back \$184.

The cost of nine ladies dancing is now \$7,553, or 20 percent more than last year's \$6,294, while 10 lords-a-leaping jumped 10 percent, to \$5,243.

Seven items on the list cost the same as they did last year, including gold rings and turtle doves, while pipers piping, drummers drumming, and the pear tree showed only modest changes up or down.

The swans are the most expensive item at \$1,000 each. The eight maids-a-milking still cost a total of just \$58 because the federal minimum wage hasn't risen. At \$7.25 each, they're the least expensive gifts in the song.



## Calendar:

### December 14:

“A Time to Enjoy Garden Club”,  
Christmas Open House,  
Diane Harbin’s home

**DECEMBER 20: 9:30 PREPARE  
ARRANGEMENTS FOR NAI A**

### **2014**

January 6, RFGC Meeting, Garden Center

Executive Meeting: 9:00 a.m.  
Refreshments: 9:30,  
by Spade and Trowel  
Meeting: 10:00 a.m.

January 8:

Remove Trees and Decoration at  
the Rome History Museum

January 23:

North Georgia Native Plant  
Symposium, Athens Georgia

February 3:

President’s Report Workshop,  
Garden Center

February 17: President’s Report Due

February 21: Arbor Day, Location TBA

## **USE OF TECHNOLOGY**

Again, RFGC has moved into the technology era with the use of E-vite for the invitations to the Christmas Open House. The Federated Facts continues to be sent out by e-mail. If you have friends or members who are not receiving the Federated Facts, please have them communicate with an e-mail address to us at [rfgcgardenclub1315@gmail.com](mailto:rfgcgardenclub1315@gmail.com).

Please visit our website: [www.romefederatedgardenclubs.com](http://www.romefederatedgardenclubs.com).

The new member to the federation (Hoe’n in Euharlee) will be added soon. Also please communicate with Don and Judy Howerton to include photos or updates on your garden club.



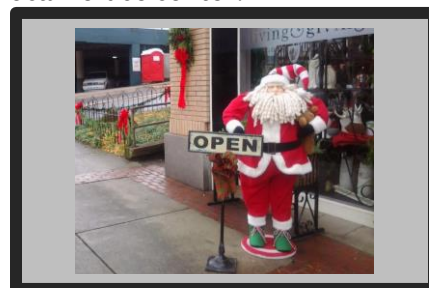
The Garden Center is located at 100 E. 8<sup>th</sup> St.



## **WILDLIFE WALL**

Since many beneficial insects, such as ladybugs and ground beetles, struggle to find welcoming habitats in our neat, modern environment, we should do all that we can to encourage them to make our gardens their home.

One simple solution is to leave a quiet corner of your garden a little unkempt, with perhaps a pile of logs left to rot down naturally. Alternatively, you could create a wildlife wall. Most insects love to live in crack and crevices in wood or stone, and a wildlife wall imitates these ideal conditions. The wall is easy to construct with alternate layers of wood, bricks, old canes, broken tiles and other building materials, and its textures and patterns make an attractive garden feature. If you have not got suitable material at home try your local refuse center.



**MERRY CHRISTMAS  
MAKE SURE YOU SEE  
ALL THE GARDEN  
SITES!**

## THE WREATHS HAD AN IMPACT

I need to share with the club that I got a call from Janice Hopkins at the Cancer

Center concerning our shell wreath: A patient who doesn't have much time left on this earth admired our wreath. So, the Cancer Center allowed a benefactor for the patient to purchase the wreath for \$350 and take it home today. The bids don't actually close until the end of the week but this person wanted to make sure that the patient had the pleasure of owning this wreath. I for one don't always understand the implications of our work as a garden club. We can create beauty and we can also honor the wishes of someone we don't even know. **Thank you to the committee again, Susan, MJ & Dawn. Jennifer Kearns**



Due to the efforts of the Rome Federated Garden Club, local decorators, and florists, over \$6000 was raised for the Cancer Navigators.

Kathy Donahue, Editor, Federated Facts



**NEEDED: 3-4 MEMBERS FROM EACH CLUB** IN THE RFGC TO PREPARE TABLE CENTERPIECES FOR THE NAIA FOOTBALL GAME BANQUET. YOU ARE NEEDED FRIDAY, DECEMBER 20, AT 9:30 A.M. PLEASE BRING GREENERY FROM YOUR YARD, CLIPPERS, AND ANYTHING ELSE YOU WOULD NEED TO PREPARE SMALL VASES (THEY ARE FURNISHED. WE WILL MEET AT THE **FORUM**

